

sustainable
sanitation
alliance



31st SuSanA Meeting

**16th to 20th August 2021
(online)**

Contact: info@susana.org



sustainable
sanitation
alliance

**SuSanA Working Group 7 Meeting –
Sustainable WASH in Institutions and Gender Equality**

www.susana.org

31st SuSanA Meeting , 16 – 20 August, 2021

Focus on WASH and safe reopening of Schools – Global experiences

Etiquettes for today's Session

Please turn off your video and microphones

Please use the chatbox for questions

There will be no breaks

The entire session will be recorded

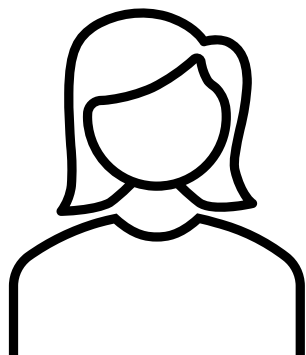
Introduction

Name

Organisation (government, NGO, private sector, UN etc.)

Where are you based?

First time to attend the WG meeting?



I am Lucie Leclert, Consultant, for
GIZ, based in Ethiopia, third time
attending WG 7 meeting.

Agenda

TOPIC	TIME	SPEAKER
Welcome to the WG 7 and opening notes	15 min	Bella Monse, WG 7 Co-lead
Round of introduction		Lucie Leclert - Moderator
Updates within the WASH in Schools landscape <i>Introduction of Global WinS Network</i> <i>Upcoming activities and time for Q&A</i>	15 min	WinS Network secretariat, GIZ Cherrydyn Miguel
Fit for School – Africa initiative <i>Introduction to the initiative</i> <i>Call for informants for research</i>	10 min	Tina Kanathigoda, GIZ
Hygiene and Behavior Change Coalition: Support for Safe reopening of Schools <i>Introduction and time for Q&A</i>	15 min	Margarette Lim, GIZ Manila
Updates from WG 7 members <i>Input from participants based on teasers</i> <i>Update on WASH in HCF or WASH in other institutions</i> <i>Suggestions for WG 7 activities</i>	30 min	Bella Monse

Teaser for the discussion at the end – to keep in mind

- What tools have proven to be successful in your context?
Please share with us your pictures, data, videos or stories of your successful sensitization or management tools or infrastructure.
- What form of coordination is in place in your country or region? Does it work?
- What else is needed to make sure schools are safe places?

sustainable
sanitation
alliance

Updates within the WASH in Schools landscape

www.susana.org

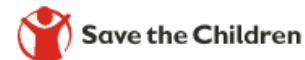
31st SuSanA Meeting , 19 August, 2021

Cherrydyn Miguel, GIZ
Global WinS Network Secretariat



The WinS Network

Global inter-agency network of WinS practitioners and academia for harmonization of Development Partners to support Governments improving WASH in Schools programming and implementation.





The WinS Network – objective

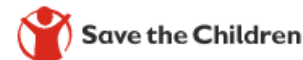
To foster a global community of practice and facilitate integrated, sustainable and globally aligned WinS programmes to achieve SDG targets by 2030.





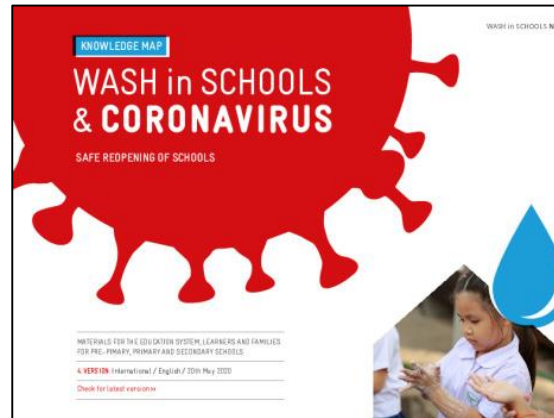
The WinS Network – work streams

1. Advocacy, policy support, and system strengthening
2. WinS monitoring and reporting
3. Research and evidence-building
4. Mainstreaming gender inclusion and equity, including MHH
5. Guidance on WinS programming
6. Knowledge management, capacity development, learning and exchange

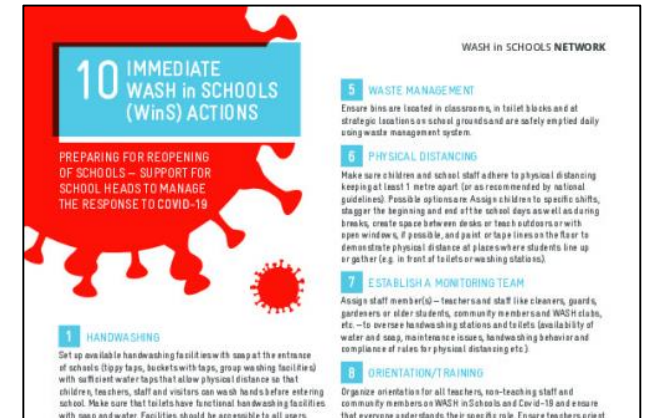




The WinS Network – knowledge products



	YES	NO	YES	NO	YES	NO	YES	NO
Handwashing facility is available	<input type="radio"/>	<input type="radio"/>	<input type="radio"/>	<input type="radio"/>	<input type="radio"/>	<input type="radio"/>	<input type="radio"/>	<input type="radio"/>
Water and soap available	<input type="radio"/>	<input type="radio"/>	<input type="radio"/>	<input type="radio"/>	<input type="radio"/>	<input type="radio"/>	<input type="radio"/>	<input type="radio"/>
If no handwashing facility, hand sanitizer available	<input type="radio"/>	<input type="radio"/>	<input type="radio"/>	<input type="radio"/>	<input type="radio"/>	<input type="radio"/>	<input type="radio"/>	<input type="radio"/>
Temperature sensor available (optional)	<input type="radio"/>	<input type="radio"/>	<input type="radio"/>	<input type="radio"/>	<input type="radio"/>	<input type="radio"/>	<input type="radio"/>	<input type="radio"/>
Time of checking								
Remarks								

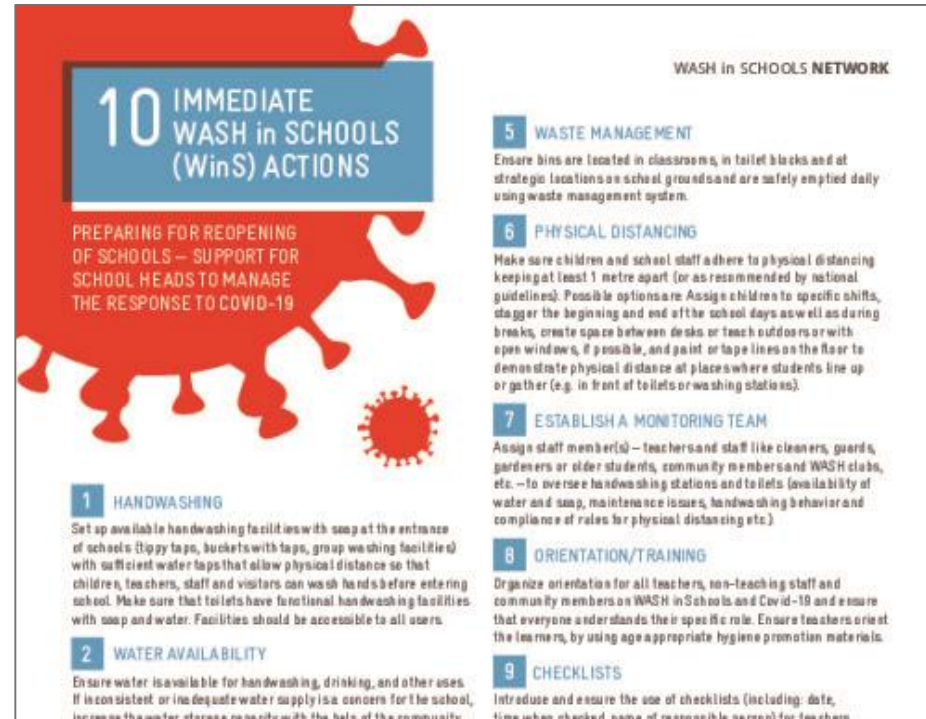




The WinS Network – knowledge map



The WinS Network – 10 immediate WinS actions



10 IMMEDIATE WASH in SCHOOLS (WinS) ACTIONS

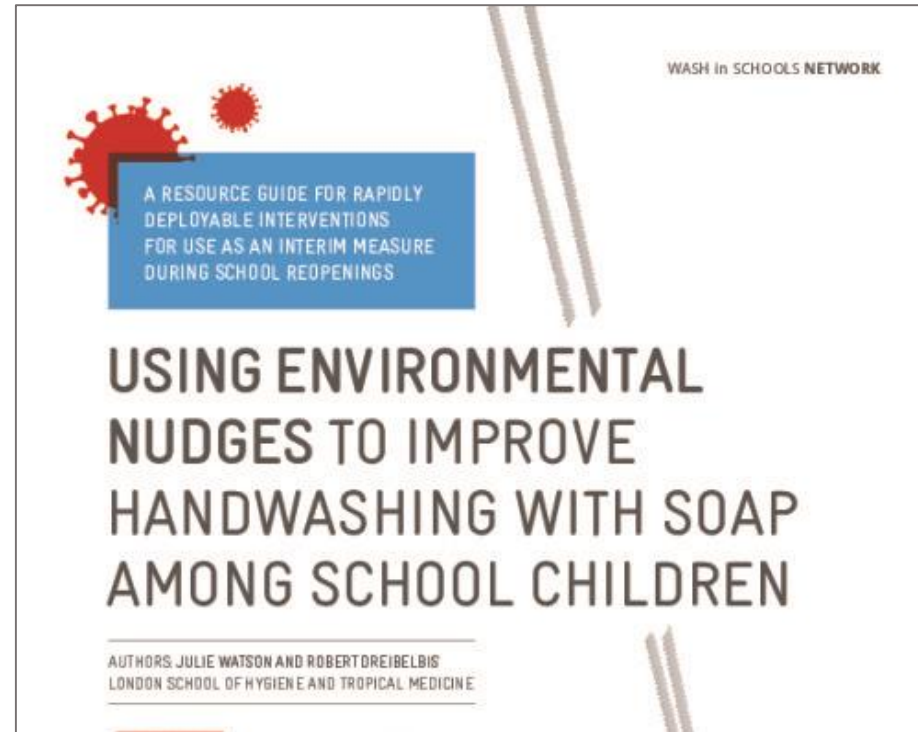
PREPARING FOR REOPENING
OF SCHOOLS – SUPPORT FOR
SCHOOL HEADS TO MANAGE
THE RESPONSE TO COVID-19

- 1 HANDWASHING**
Set up available handwashing facilities with soap at the entrance of schools (tippy taps, buckets with taps, group washing facilities) with sufficient water taps that allow physical distance so that children, teachers, staff and visitors can wash hands before entering school. Make sure that toilets have functional handwashing facilities with soap and water. Facilities should be accessible to all users.
- 2 WATER AVAILABILITY**
Ensure water is available for handwashing, drinking, and other uses. If inconsistent or inadequate water supply is a concern for the school, increase the water storage capacity with the help of the community.
- 3**
- 4**
- 5 WASTE MANAGEMENT**
Ensure bins are located in classrooms, in toilet blocks and at strategic locations on school grounds and are safely emptied daily using waste management system.
- 6 PHYSICAL DISTANCING**
Make sure children and school staff adhere to physical distancing keeping at least 1 metre apart (or as recommended by national guidelines). Possible options are: Assign children to specific shifts, stagger the beginning and end of the school days as well as during breaks, create space between desks or teach outdoors or with open windows, if possible, and paint or tape lines on the floor to demonstrate physical distance at places where students line up or gather (e.g. in front of toilets or washing stations).
- 7 ESTABLISH A MONITORING TEAM**
Assign staff member(s) – teachers and staff like cleaners, guards, gardeners or older students, community members and WASH clubs, etc. – to oversee handwashing stations and to toilets (availability of water and soap, maintenance issues, handwashing behavior and compliance of rules for physical distancing etc.).
- 8 ORIENTATION/TRAINING**
Organize orientation for all teachers, non-teaching staff and community members on WASH in Schools and Covid-19 and ensure that everyone understands the specific role. Ensure teachers orient the learners, by using age appropriate hygiene promotion materials.
- 9 CHECKLISTS**
Introduce and ensure the use of checklists (including: date, time when checked, name of responsible person) for teachers.
- 10**


WASH in SCHOOLS NETWORK



The WinS Network – environmental nudges



The WinS Network – school checklist



CHECKLIST FOR SCHOOL ENTRANCES

PERSON IN CHARGE / SUPERVISOR: _____

WASH IN SCHOOLS CHECKLIST BY ANHANG COVID-19 RESPONSE

WEEK: _____

COVID-19 / Check the items listed below the table box at the school entrance. Check items daily for each children entering school premises. Add remarks if necessary.

	MONDAY		TUESDAY		WEDNESDAY		THURSDAY		FRIDAY	
	YES	NO	YES	NO	YES	NO	YES	NO	YES	NO
Handwashing facility or soap available	<input type="radio"/>	<input type="radio"/>	<input type="radio"/>	<input type="radio"/>	<input type="radio"/>	<input type="radio"/>	<input type="radio"/>	<input type="radio"/>	<input type="radio"/>	<input type="radio"/>
Water and soap available	<input type="radio"/>	<input type="radio"/>	<input type="radio"/>	<input type="radio"/>	<input type="radio"/>	<input type="radio"/>	<input type="radio"/>	<input type="radio"/>	<input type="radio"/>	<input type="radio"/>
If no handwashing facility, hand sanitizer available	<input type="radio"/>	<input type="radio"/>	<input type="radio"/>	<input type="radio"/>	<input type="radio"/>	<input type="radio"/>	<input type="radio"/>	<input type="radio"/>	<input type="radio"/>	<input type="radio"/>
Temperature scanner available (optional)	<input type="radio"/>	<input type="radio"/>	<input type="radio"/>	<input type="radio"/>	<input type="radio"/>	<input type="radio"/>	<input type="radio"/>	<input type="radio"/>	<input type="radio"/>	<input type="radio"/>
Time of checking:										
Name & remarks:										

UNICEF WASH / Check these additional aspects

	DATE	YES	NO
Posters on proper hand hygiene visible in the handwashing area		<input type="radio"/>	<input type="radio"/>
Posters on physical distancing visible in the school entrance		<input type="radio"/>	<input type="radio"/>
Proper cough and sneeze etiquette poster visible in the school entrance		<input type="radio"/>	<input type="radio"/>
Persons wearing masks visible in the school entrance (if applicable)		<input type="radio"/>	<input type="radio"/>
Persons to stay home when sick visible in the school entrance		<input type="radio"/>	<input type="radio"/>

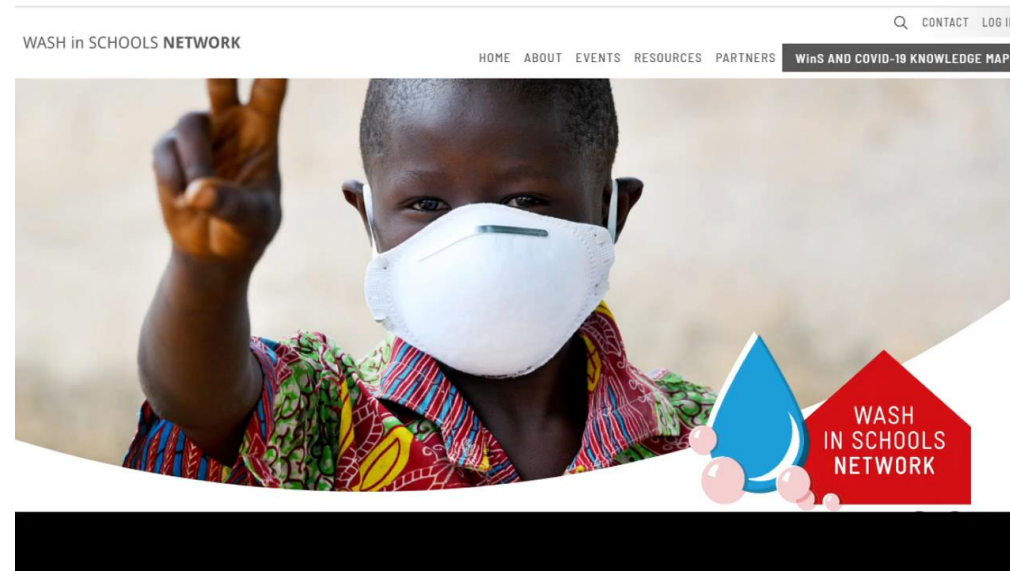
SIGNED BY PERSON IN CHARGE / SUPERVISOR: _____

SIGNED BY SCHOOL HEAD: _____

DATE COMPLETED: _____



The WinS Network – website (winsnetwork.org)





The WinS Network – upcoming events

- Sep 2021 – Webinar on stocktaking on school reopening
- Oct 2021 – WinS Session at UNC
- Nov 2021 – 9th WinS International Learning Exchange Event
- Nov 2021 – Partners' Meeting



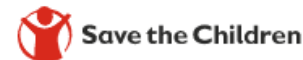


The WinS Network – happening next week

Fit for School at the World Water Week, Stockholms
(www.worldwaterweek.org)

Session 1: Cleanliness at your fingertips: Calculate WASH costs with your phone (24 Aug)

Session 2: Approaching One Health through Water, Sanitation and Hygiene in Schools (27 Aug)





The WinS Network – call for engagement

Hand Hygiene for All (HH4A) is developing a Hand Hygiene Research Agenda – In School Settings.

Zoom discussions:

August 24th 9-10am ET and September 2nd 8-9am ET

Contact Jed Snyder (Jedidiah.Snyder@emory.edu) for more details.





The WinS Network – contact us

Email:

winsnetwork@giz.de



Fit for School Initiative for Africa

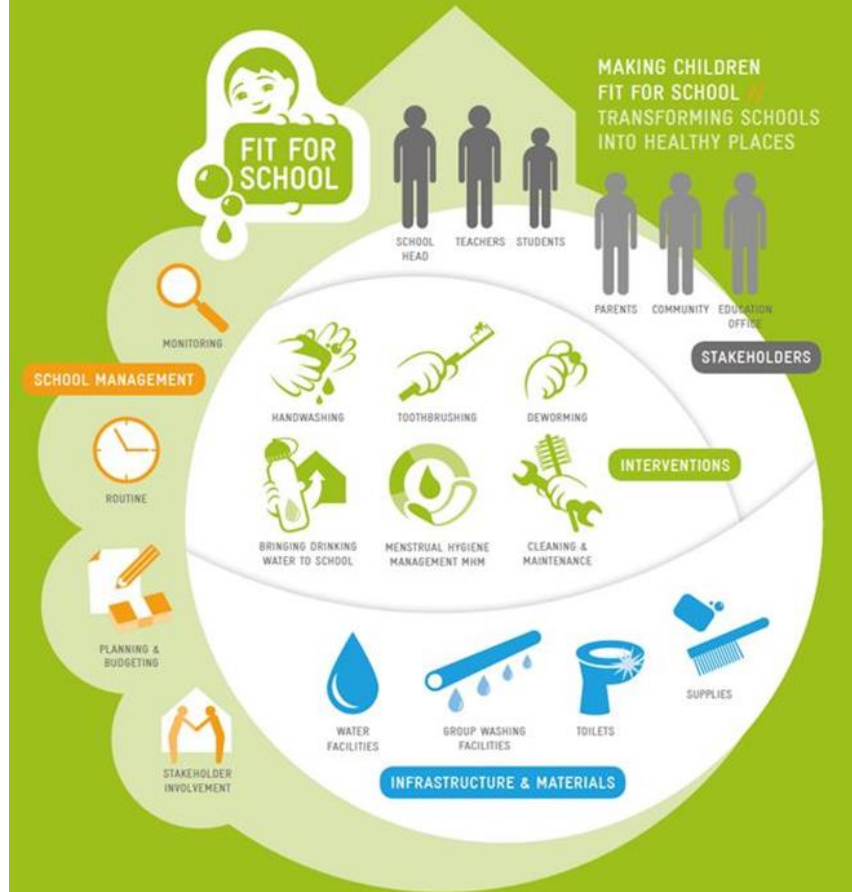
Tina Kanathigoda, Water Policy and Sustainable Sanitation Sector Programme

Supporting the global efforts for the safe reopening of schools

- Short-term funding from German Government, BMZ WASH Department (COVID-19 response)
- **Adapting** elements of the **Fit for School** Approach for the safe reopening of schools to the context of **schools in Sub-Saharan Africa**
- Focus on readiness assessments and monitoring tools, capacity development in national education sectors and knowledge and learning exchange
- Joining the global efforts for the safe reopening of schools during the COVID-19 pandemic, e.g. Global Initiative by UNICEF, UNESCO and WB - [Recovering Education in 2021](#)
- [Global WASH in Schools Network](#)

All material available on SuSanA Library and WinS Network



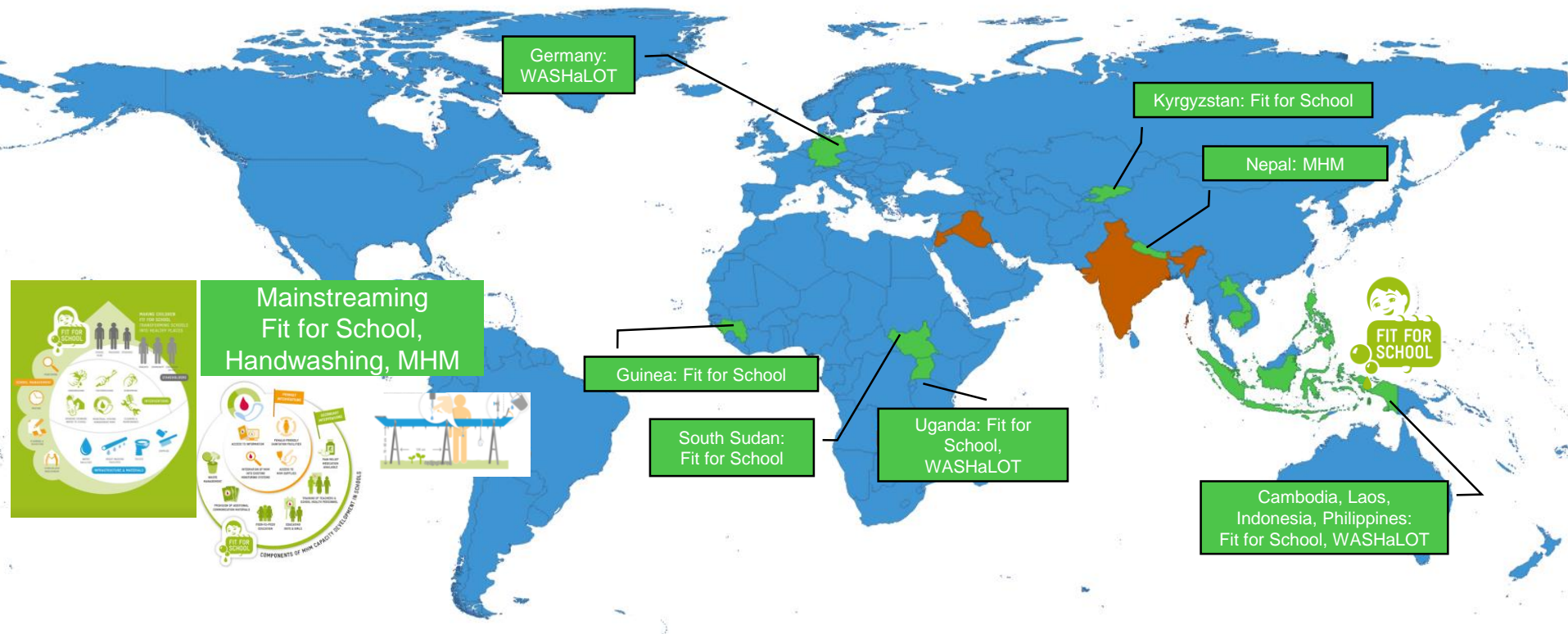


German Development Cooperation Regional Programme Fit for School in South-East Asia

Resources / Available Material:

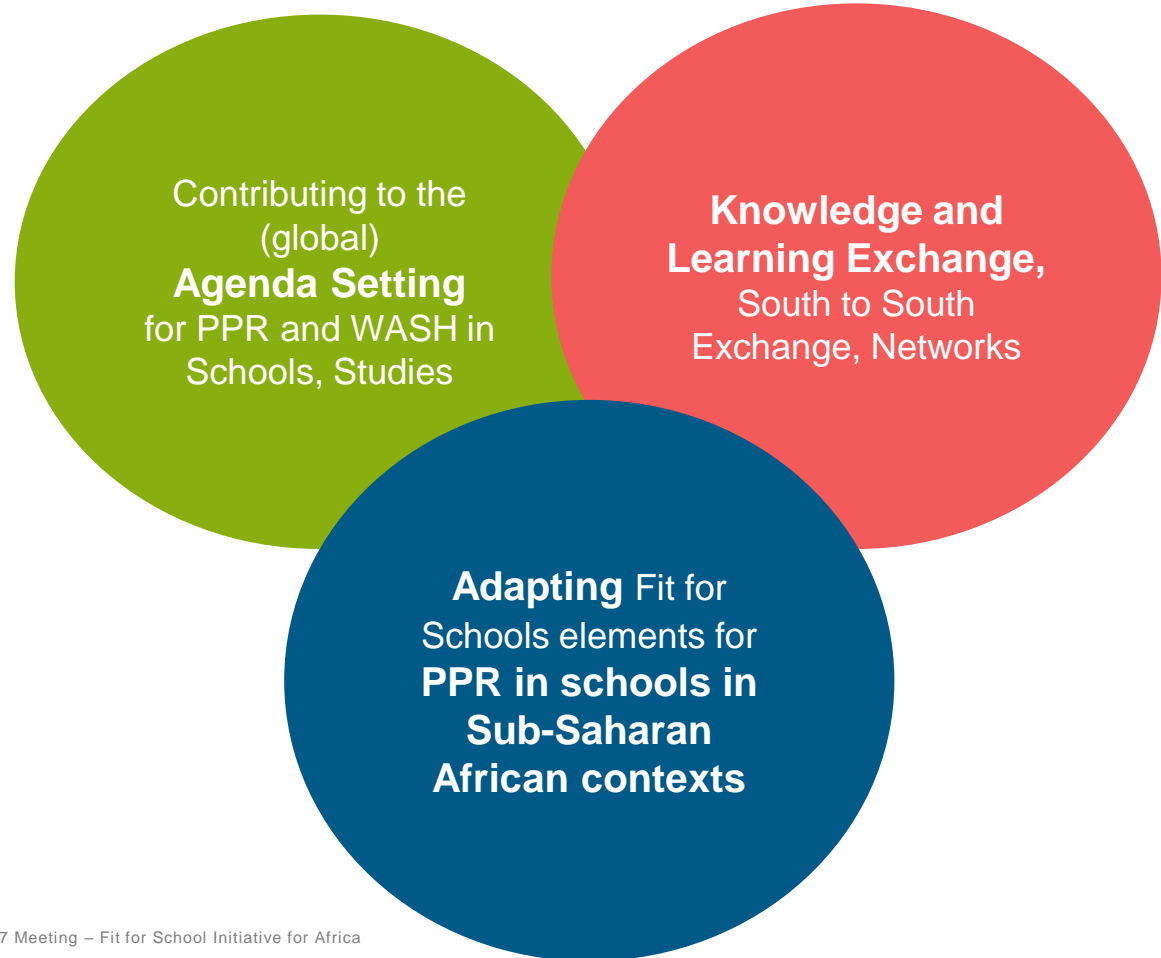
- Fit for School
www.fitforschool.international/fit-resources
- SuSanA Library

Related Role of Sector Programmes on Water Policy and Sustainable Sanitation: **Agenda Setting and Mainstreaming Innovation within German Development Cooperation ... and beyond**



Fit for School Initiative for Africa

Core Elements



Raising attention for the need of safe reopening of schools and the importance of WASH in Schools


Supporting Studies and Initiatives

- Working with the Global WASH in Schools Network and global partners
- Conference sessions
- Policy briefings
- Articles, video material
- Compilation on Tools and Learnings for PPR and WASH in Schools in Africa

Contributing to the
(global)
Agenda Setting
for PPR and WASH in
Schools, Studies

Supporting Knowledge and Learning Exchanges, South to South Exchanges

- Events planned so far:
 - **SuSanA WG 7 Meeting (August 2021)**
 - **UNC Water and Health (October 2021)**
 - **ILE - International Learning Event (November 2021)**
- Documentation, Dissemination



**Knowledge and
Learning Exchange,**
South to South
Exchange, Networks

Translating country-specific requirements and Government guidelines into practical, easy-to-understand and implementable tools for schools

- Adapting Fit for School material to national context
- Checklists, Assessment Tools, Posters etc.
- Massive Open Online Course (MOOC) on PPR in Schools
- Selected countries with partners on the ground
 - **South Sudan** - Model Schools in Torit & Yambio; Deutsche Welthungerhilfe
 - **Malawi** - Model Teachers Training Colleges; GIZ Education Programme Malawi

Adapting Fit for
Schools elements for
**PPR in schools in
Sub-Saharan
African contexts**





Call for Informants: Experiences on Safe Reopening

... Knowledge and Learning Exchange

... Compilation on Tools and Learnings for PPR and WASH in Schools in Africa

... Networking

Contacts for Fit for School Initiative for Africa

Tina Kanathigoda (annakristina.kanathigoda@giz.de)

Bella Monse (bella.monse@giz.de)

Jan Schlenk (jan.schlenk@giz.de)



GIZ-Hygiene & Behaviour Change Coalition Programme Overview

19 August 2021



Implemented by:



Water, Sanitation and Hygiene: prerequisite for a safe return to school



WinS and pandemic preparedness and response (PPR) in schools

- **Context:**
 - Indonesia – most schools are closed, with a few schools in remote areas that are open
 - Cambodia & Philippines – all schools are closed pending higher vaccination rates
 - Various documents from global guiding bodies and national agencies
- **Challenge:** Lack of confidence among Ministries of Education and schools in consistently complying with global recommendations and national implementing guidelines related to PPR in school settings

WinS and pandemic preparedness and response in schools

PROGRAMME SUMMARY

Support MoE in safe school reopening & operation

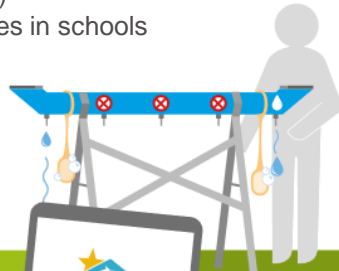
- Development of management support tools for schools (checklists, posters, stickers, and more)
- Model implementation of PPR measures in schools and use learnings
- Performance indicators



MOE GUIDELINES



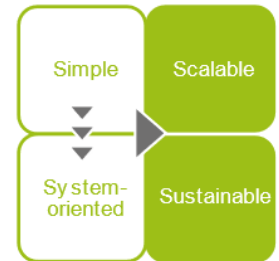
FROM MODEL SCHOOLS...



MoE

Support scaling up through MoE with respective tools

- Integration into existing systems
- Capacity development at scale (MOOC)



4S PRINCIPLES

TO MORE SCHOOLS...

TO ALL SCHOOLS

School visits



Thank you!

